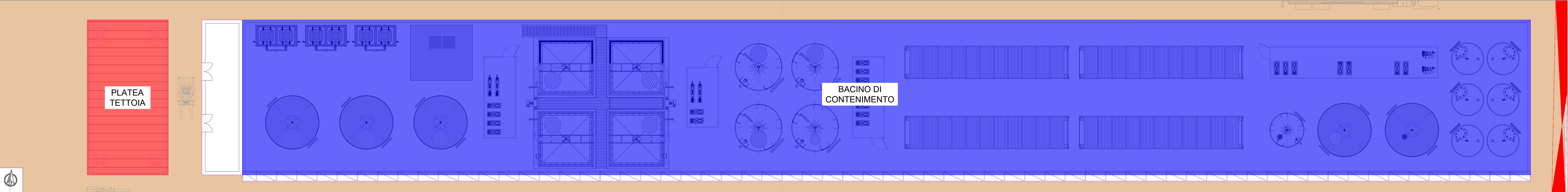
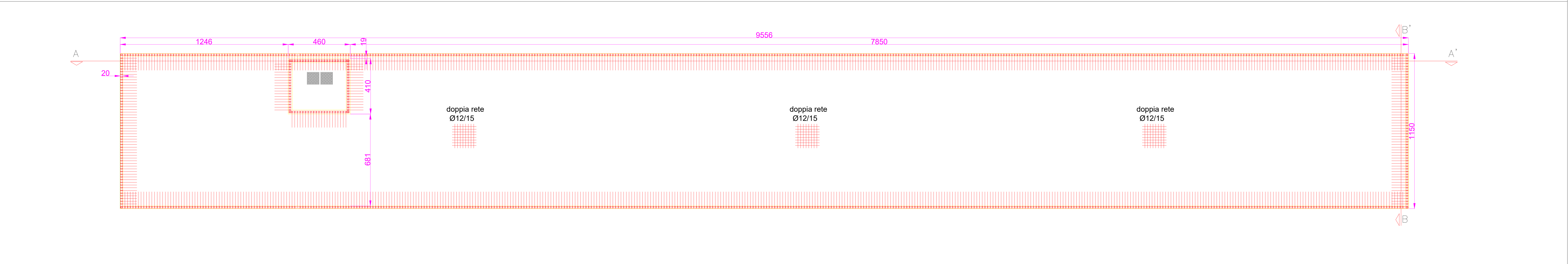


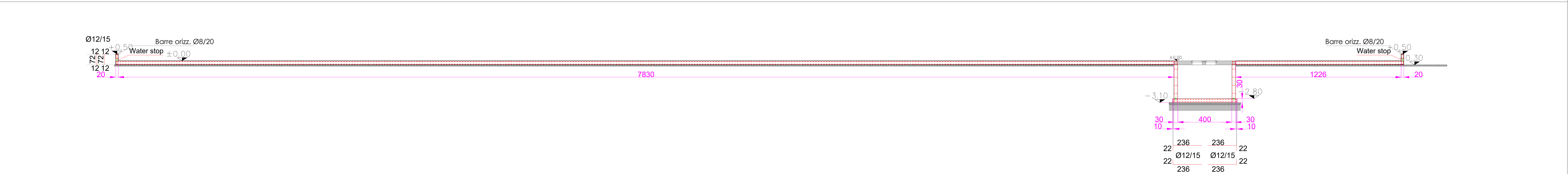
NAVIGATORE AREE - SCALA 1:100



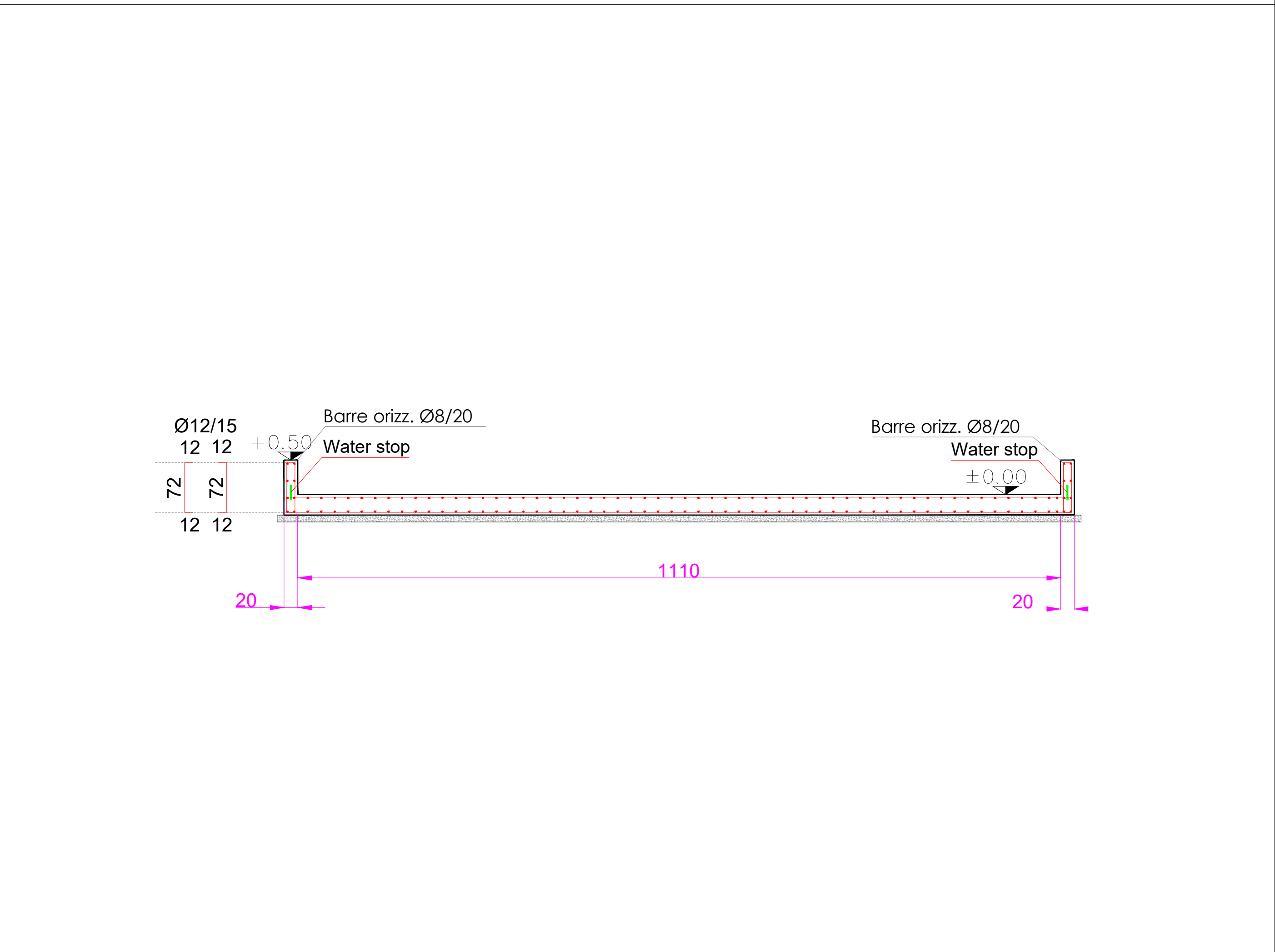
PLANIMETRIA BACINO DI CONTENIMENTO - SCALA 1:100



SEZIONE A-A' - SCALA 1:100

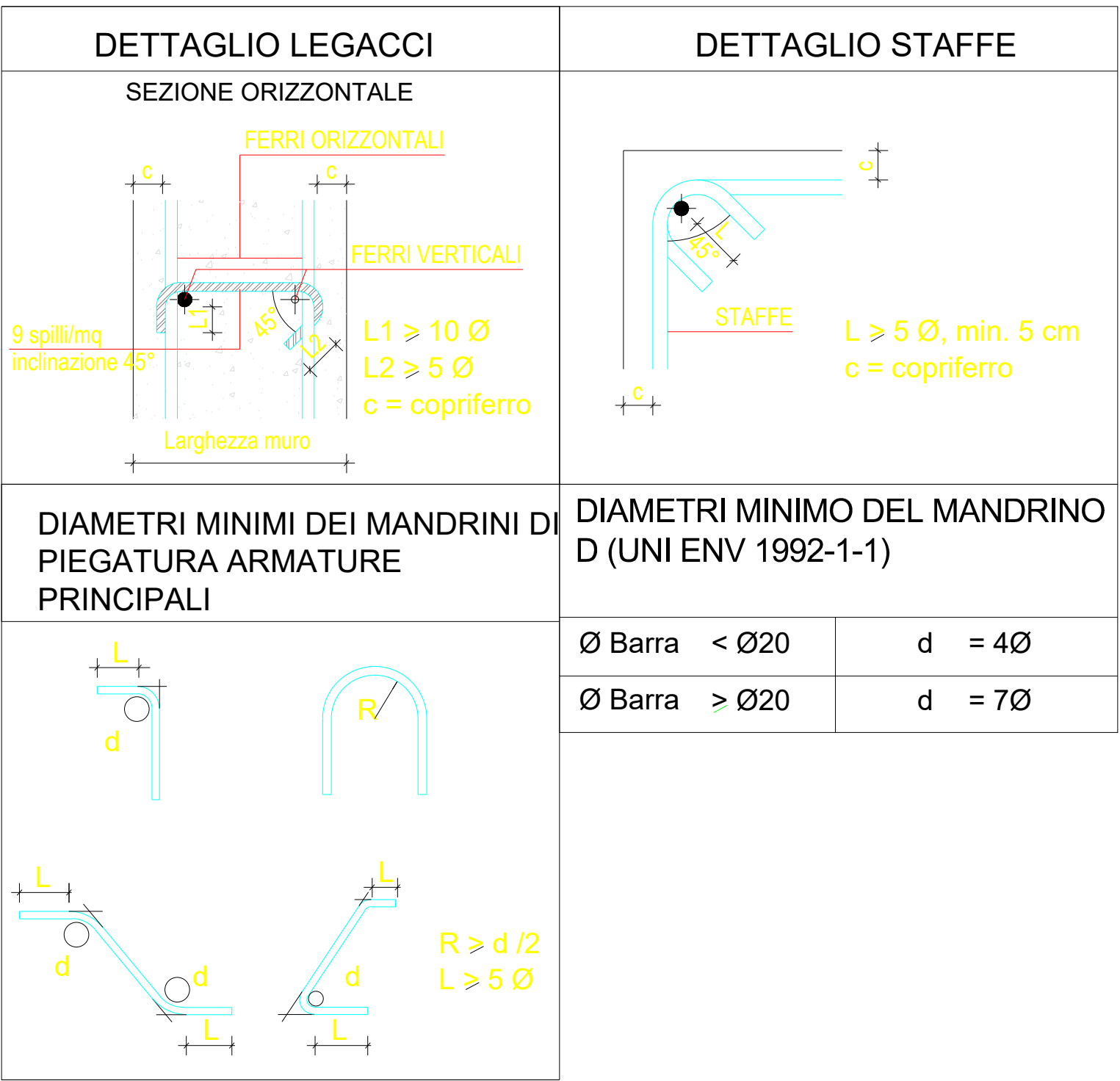
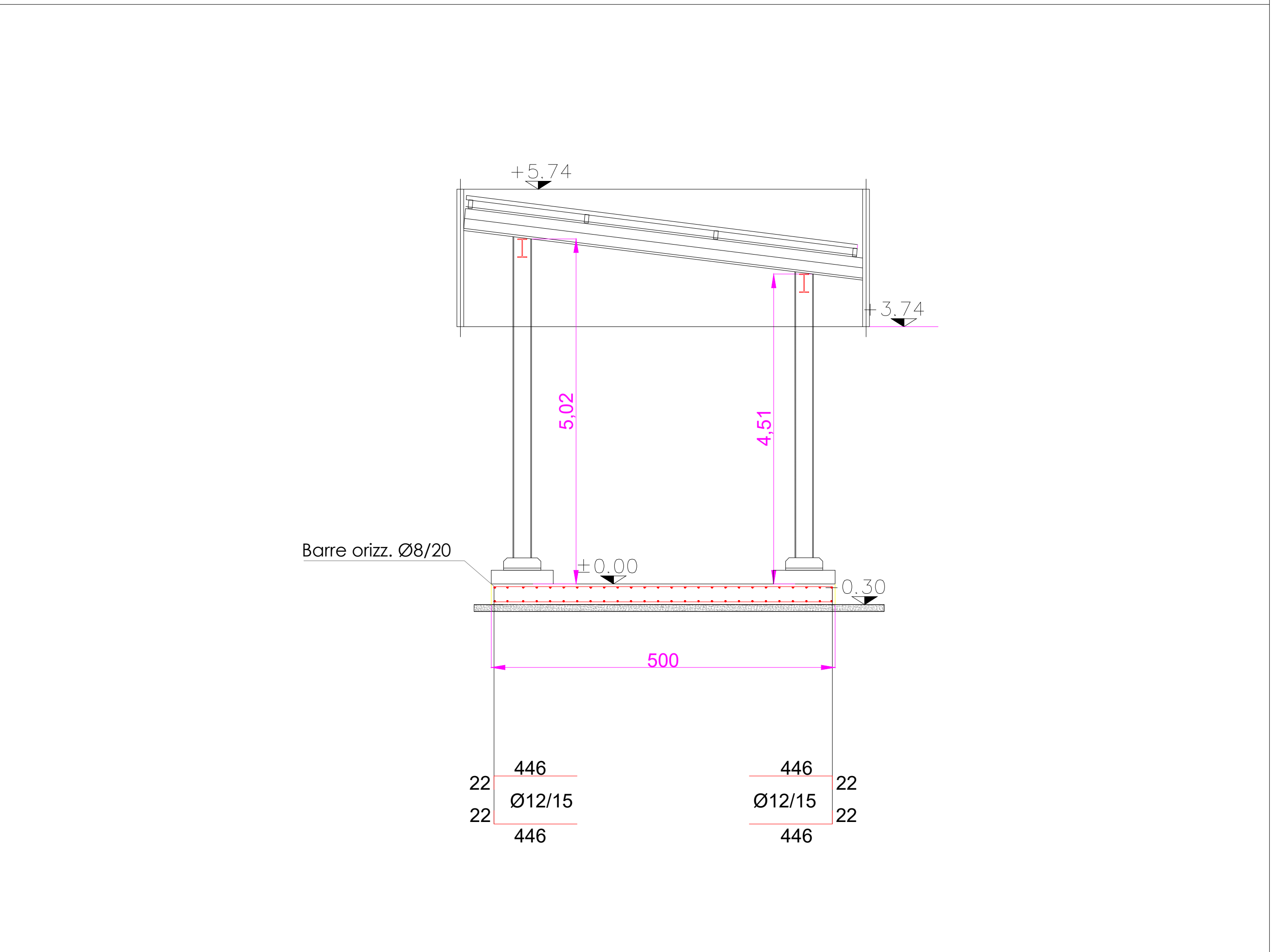


SEZIONE B-B' - SCALA 1:50



PLANIMETRIA PLATEA TETTOIA - SCALA 1:50

SEZIONE C-C' - SCALA 1:50



PROPRIETA' DEI MATERIALI			
CALCESTRUZZO	CLASSE	C28/35	
	DOSAGGIO CEMENTO	CEM II/A-LL42,5R	
	RESISTENZA A COMPRESSIONE [N/mm <sup>2</sup> ]	CUBIC R <sub>ca</sub>	CLINDRICAL R <sub>ca</sub>
		35	28
		S4	
	CONSISTENZA	XC2	
MAGRONE	DURABILITA'	C12/15	
	CLASSE	C12/15	
	DOSAGGIO CEMENTO	CEM II/B-M32,5R	
	RESISTENZA A COMPRESSIONE [N/mm <sup>2</sup> ]	CUBIC R <sub>ca</sub>	CLINDRICAL R <sub>ca</sub>
		15	12
S4			
	CONSISTENZA	X0	
ACCIAIO	DURABILITA'	B 450 C	
	CLASSE	450	
	RESISTENZA A TRAZIONE F <sub>yk</sub> [N/mm <sup>2</sup> ]	450	
COPRIFERRO = 3 cm			
SOVRAPPONISCE ARMATURE ≥ 40 Ø			
INTERFERRO ≥ Ø; ≥ 20 mm			

## INQUADRAMENTO CARTOGRAFICO



<b>SILPDUE s.r.l.</b>	<b>AB Green s.r.l.</b>	<b>CAVA LA BOLLÀ - ALESSANDRIA</b>
		DISCARICA PER PIETRICO FERROVIARIO COMITATO AMIANTO
<b>I.S.A.F.</b> Via Paleocapa 192-0 - 17100 Savona TEL. 019-806914 FAX 019-8028027 E-mail: <a href="mailto:isaf@isafel.it">isaf@isafel.it</a>	<b>GE Geotechnical Engineering</b> Via Gian Domenico Cassini 21 - 10129 Torino TEL. 011-19715336 E-mail: <a href="mailto:mario.mariano@geotechnical-engineering.com">mario.mariano@geotechnical-engineering.com</a>	